



# External Wireless

User Guide (v1.0 – May 2011)

D. Hlady (dave.hlady@sd6.bc.ca)

## Introduction

This guide will show you how to connect to the external wireless network and access the Internet.

## Connecting the SD6 External Network

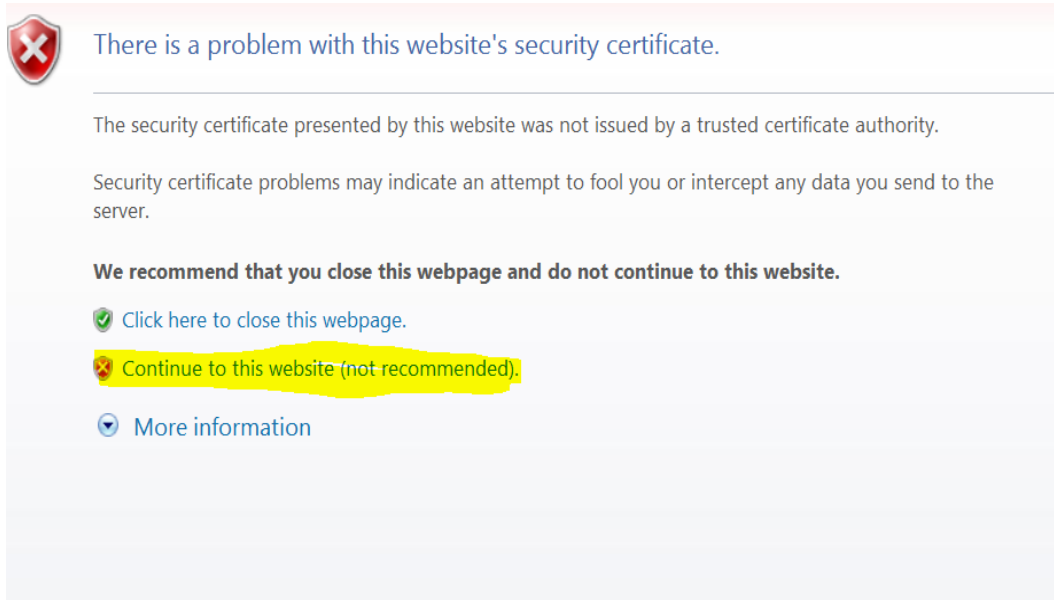
Open the Wireless connections box and double click SD6 External.



In the security key box type: *password*



Open Internet Explorer or another Internet browser you have installed on your computer. You may see a message similar to the one below. Click on *Continue to this website (not recommended)*.



Next you will see the HP ProCurve Networking page. Enter the username and password you have been supplied with and click proceed. You will authenticate and be able to browse the internet.

**Note:** If you are a SD6 staff member and wish to access the external network using your own SD6 username and password please submit a request to your tech.



Technology for better business outcomes.  
» Learn more about HP ProCurve networking



Username:	<input type="text" value="guest"/>
Password:	<input type="password"/>
<hr/>	
<input type="button" value="Proceed"/>	