

Rocky Mountain Online Learning

DRAFT STRATEGIC PLAN 2022 – 2023

Priority 1: Equity and Inclusion

Learn at Home K - 9

Data story



- We prefer a more blended program on-line and paper based options
- We like all resources on line. Do not change a thing
- Other options

Learn at Home Parent Survey Results

Qualitative Data:

- End of the year communication with parents indicates a need for increased flexibility in programming whereby students/families are able to explore areas of interest in specific curricular areas

Strategy: To increase flexible program options for Learn at Home students and families

Action:

- Work with families to create Student Learning Plans that address individual interests and students passions
- Infuse passion and inquiry based projects into all curricular areas
- Provide paper based learning opportunities for families without access to internet
- Ongoing communication with parents to review student learning plans and adjust strategies and supports if needed

Measure

- Parent survey
- Student performance as measured by curricular performance standards

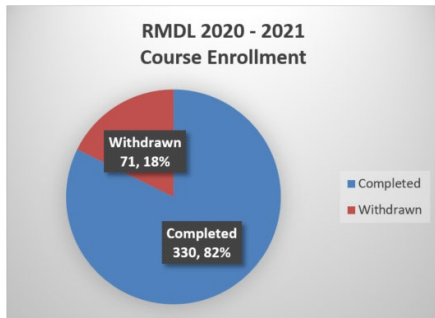
Outcome:

- Survey results indicate increased student engagement and achievement
- Improved parental satisfaction with program delivery
- Sustained and/or increased student enrollment

Priority 1: Equity and Inclusion

Online Courses Grades 10 – 12

Data



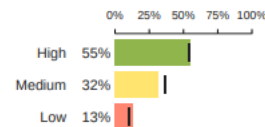
- Awaiting 2021 – 2022 course completion data

SD 6 Middle Years Development Instrument Survey Results (Grade 8)

CONNECTEDNESS WITH ADULTS

ADULTS AT SCHOOL

Assesses the quality of relationships children have with the adults they interact with at school. e.g., "At my school there is an adult who believes I will be a success."



SD6 Board Report Feb 2022:

Grade 10-12 students have the benefit of RMDL staff communicating directly with SD6 Secondary School staff to ensure students meet graduation program requirements and remain on track for graduation. RMDL staff work collaboratively with other schools and district staff to ensure assessment practices align with standard schools throughout the District.

Strategy: To provide effective online programming and supports to meet the individual learning needs of grade 10 -12 learners in SD6

Action:

- Utilize the communication tools embedded in D2L Brightspace (Learner Management System) to maintain ongoing and consistent communication, and build a sense of community with students and families.
- Create student priority lists using Microsoft TEAMS to be shared with standard schools staff (Admin, LST, Counsellors and IESW)
- Establish formal progress review periods with Standard school teams (1 per term) (Wrap around approach to ensuring success of SD6 learners)
- All students have access and instruction to utilize the assisted technology embedded in D2L Brightspace

Measure:

- Course completion rates
- Parent and Student Survey 2 times per year

Outcome:

- Increase student engagement and feeling of connectedness
- 100% course completion rates
- Students and parents report satisfaction with communication and supports

Priority 2: Success for Each Learner

Literacy: Learn at Home K - 9

Data Story

- May 2022 K-3 Learners: 58% Emerging/Developing in Literacy
- May 2022 4-7 Learners: 38.5% Emerging/Developing in Literacy
- Awaiting final analysis of reading assessments (PM, F&P)

Strategy: To improve student outcomes in reading

Action:

- Equip parents with structured, easy to follow guides and strategies focused on building Foundational Literacy skills
 - K – 3: Focus on Phonemic awareness using the Heggerty resource
 - Gr. 4 – 7: Engage students in online reading program focused on building intermediate reading skills (Online program: Get Epic)
- Ongoing consultation with District VP for Literacy to determine reading assessment for our grade 8 and 9 students

Measure:

- PM benchmarks, Fountas and Pinell assessments 3X per year
- Teacher based assessments (RAZ Kids – Monthly running records)

Outcome:

- Students are meeting/exceeding grade appropriate learning outcomes
- K- 7: Noted improvement in reading scores
- Grade 8 and 9 Literacy (reading) assessment in place

Numeracy: Learn at Home K - 9

Data Story:



Number Sense Rubric
SNAP (Student Numeracy Assessment & Practice)

Competency	1 Student understanding and application of learning standards is not evident	2 The student demonstrates some understanding and application of number sense	3 The student demonstrates proficient understanding and application of number sense
Communicating and Representing Picture Dot Describe Picture	<ul style="list-style-type: none"> Picture does not show the value of the number Inaccurate Description and elaboration of pictorial representation is not evident Communication is not clear 	<ul style="list-style-type: none"> Picture shows some value in representing the number Partially accurate Partial accuracy in describing and elaborating on pictorial representation Partially communicated 	<ul style="list-style-type: none"> Picture is clearly communicated and represents the value of the number Accurate Accurately describes and elaborates on pictorial representation Clearly communicated
Expanded Form	<ul style="list-style-type: none"> The value of each digit is not evident 	<ul style="list-style-type: none"> Partially accurate in demonstrating the value of each digit 	<ul style="list-style-type: none"> Accurately demonstrates the value of each digit
Understanding and Solving 3 Equations	<ul style="list-style-type: none"> Accurate grade-appropriate operations are not evident 	<ul style="list-style-type: none"> Accurately uses grade-appropriate operations in one or two equations 	<ul style="list-style-type: none"> Accurately uses grade-appropriate operations in all three equations
Connecting and Reflecting Real Life Connection	<ul style="list-style-type: none"> A real life example is not provided 	<ul style="list-style-type: none"> A partial connection to a real life example is provided 	<ul style="list-style-type: none"> Connection to a real life example is provided Demonstrates understanding of the number value
Reflection	<ul style="list-style-type: none"> Simple reflections on mathematical thinking are not evident 	<ul style="list-style-type: none"> Simple reflections on mathematical thinking are evident 	<ul style="list-style-type: none"> Some insight on mathematical thinking is evident
Reasoning and Analyzing Number Line	<ul style="list-style-type: none"> Incorrect estimate of placement of number on provided number line 	<ul style="list-style-type: none"> Partially correct estimate of placement of number on provided number line 	<ul style="list-style-type: none"> Correct estimate of placement of number on provided number line with benchmarks
Counting Forwards and Backwards	<ul style="list-style-type: none"> Incomplete and inaccurate 	<ul style="list-style-type: none"> Partially complete and accurate 	<ul style="list-style-type: none"> Complete and accurate

Grade K – 3 Learners

- 33% approaching in connecting and reflecting
- 42 % approaching in reasoning and analyzing

Grade 4-7 Learners

- 45% approaching in connecting and reflecting
- 36 % approaching in reasoning and analyzing

Strategy: To improve student outcomes in Numeracy

Action:

- Infusing real life data analysis and problem solving activities into weekly learning activities to strengthen data analysis and problem skills
 - Weekly problems of the week
- Engage grade 8 and 9 students in District Numeracy assessment

Measure:

- Snap assessment 3 x per year (Gr K – 7)
- District Numeracy Assessment 2 x per year (Gr 8 –9)

Outcome:

- 100% of students K-7 demonstrate proficiency in connecting and reflecting and reasoning and analyzing on May snap assessments
- Grade 8 and 9 Numeracy assessment provide direction to determine Numeracy strategic goals and action plan for 2023-2024 school year

Priority 3: Teaching and Leadership Excellence

Data Story:

Sd6 Board Report Feb 2022:

Learning Management System (LMS) Change:

RMDL currently utilizes Moodle as their Learning Management System (LMS). RMDL is currently exploring the Ministry of Education adopted LMS system, D2L Brightspace. D2L Brightspace provides increased accessibility options to our learners, more refined assessment and communication capabilities, along with cost savings. Another benefit, is that D2L Brightspace is utilized by many post-secondary institutions in both British Columbia and Alberta.

Strategy: Staff to become familiar and utilize the tools available in D2L Brightspace to best support students and families.

Action:

- Attend D2L Training sessions (May, June and August), ongoing throughout the year
- Effective instructions on employing the accessibility functions of D2L Brightspace
- Hosting training sessions for Learn at Home families and staff D2L Brightspace

Measure:

- Student and parent survey

Outcome:

- Students and parents report increased engagement, communication, and accountability
- Seamless transition to a new Learner Management System
- Improved onboarding process